

LUSAIL - QATAR
thePIAZZA



Live the High Life

www.thepiazza.qa

© 2010 The Plaza, Lusail, Qatar



A unique and extraordinary design that embraces different color schemes and material-mix to create a distinct landmark. The Piazza. A high-class residential complex. In the midst of elegance. A development of 14 buildings. A beautiful charming ambience conceptualized to catch the eye from far. A stunning sight to behold from close. Creating the charisma of a picture-perfect lifestyle.

- Unique exterior
- Ground + 4-storeys
- Studios, 1, 2 and 3 bedroom apartments
- Garden apartments on ground floor
- Grand reception area
- Lift lobby
- Concierge services & 24-hour residents services



stay in a **Landmark**



Taking its place on the world's stage, Qatar is an independent Arab state, embracing the future with unswerving optimism and enviable potential. A member of the GCC, OPEC, The United Nations, The International Monetary Fund, The International Bank for Reconstruction & Development and the World Trade Organization, Qatar has achieved within decades what other countries take centuries to accomplish. Situated at the heart of the Arabian Gulf, Qatar is in close proximity to Saudi Arabia, Bahrain, United Arab Emirates and Iran. Almost completely surrounded by sea, Qatar is a fascinating, well-preserved, natural and historical site, hence an ideal family location and a very safe place to visit, live and work.

The Gulf

the pearl of

LUSAIL - QATAR
theplaza





An exhilarating modern design, Lusail is Qatar's largest domestic development, placing Qatar on the map in terms of property investment in the GCC region. A ground breaking development, Lusail combines every aspect of professional and family life to make living as smooth as possible. Fox Hills is a separate unit within the Lusail development, stretching over 1.6 kilometers and covering 17,216,000 sq. ft. in land area. Overlooking the stunning sights of the Crescent Park on one side and the luxury of a waterfront view on the other, Fox Hills in Lusail Development, Doha, Qatar, is a classic combination of commercial, residential and civic facilities.



Lusail

Fox Hills





Live the high life of the highest quality. Experience uncompromising quality standards, from the unique exterior to opulent interiors.

Suite features:

- External aluminum framed glass windows and doors
- Premium quality ceramic flooring/ skirting
- Emulsion paint on plastered walls
- Ceramic tiles flooring for balcony, yard and utilities
- Textured painted soffit and painted gypsum board ceiling

Kitchen features -

- Premium ceramic tiles flooring
- Premium ceramic walls
- 600x600 mm vinyl wrapped gypsum ceiling tiles
- Wooden kitchen cabinet with marble worktop and stainless steel sink
- Cooker hood & hob

Bathroom features -

- Quality ceramic floor & walls
- Vanity basins and mirror with stylish fittings
- Marble threshold
- 600x600 mm vinyl wrapped gypsum ceiling tiles

Quality Living

experience





Live in the lap of luxury and in the pink of health. Hush green all around to balance the buzz of your active social life and an array of fitness facilities to match. Relax and rejuvenate.

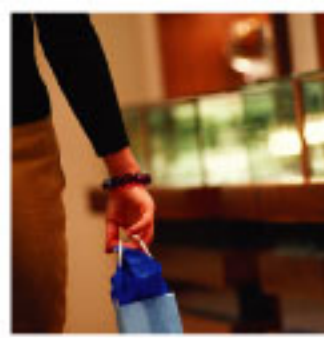
- Outdoor swimming pool and children pool
- Jogging track
- Gymnasium
- Juice bar
- Health club for men and women
- Sauna & Steam room
- Showers & changing rooms
- Children play area

fit for

L i f e



L e i s u r e



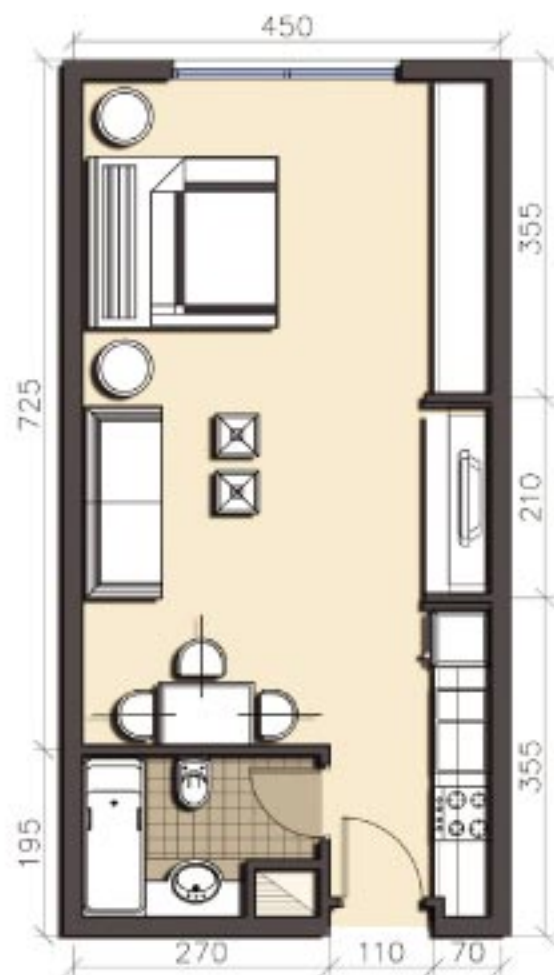
Quite simply, The Piazza is the finest residential and retail address in Fox Hills - Lusail. An unmatched asset and experience for the home owner. A clear and sure success for the businessman. And an exciting future for the investor. A dream home for the family. Enjoy the diversity that comes with socializing, shopping and living all side by side. Live in style. Live the high life.

- Variety of high class retail alongside the open garden
- Car parking in basement
- Elevator access from the parking to the apartments

High life

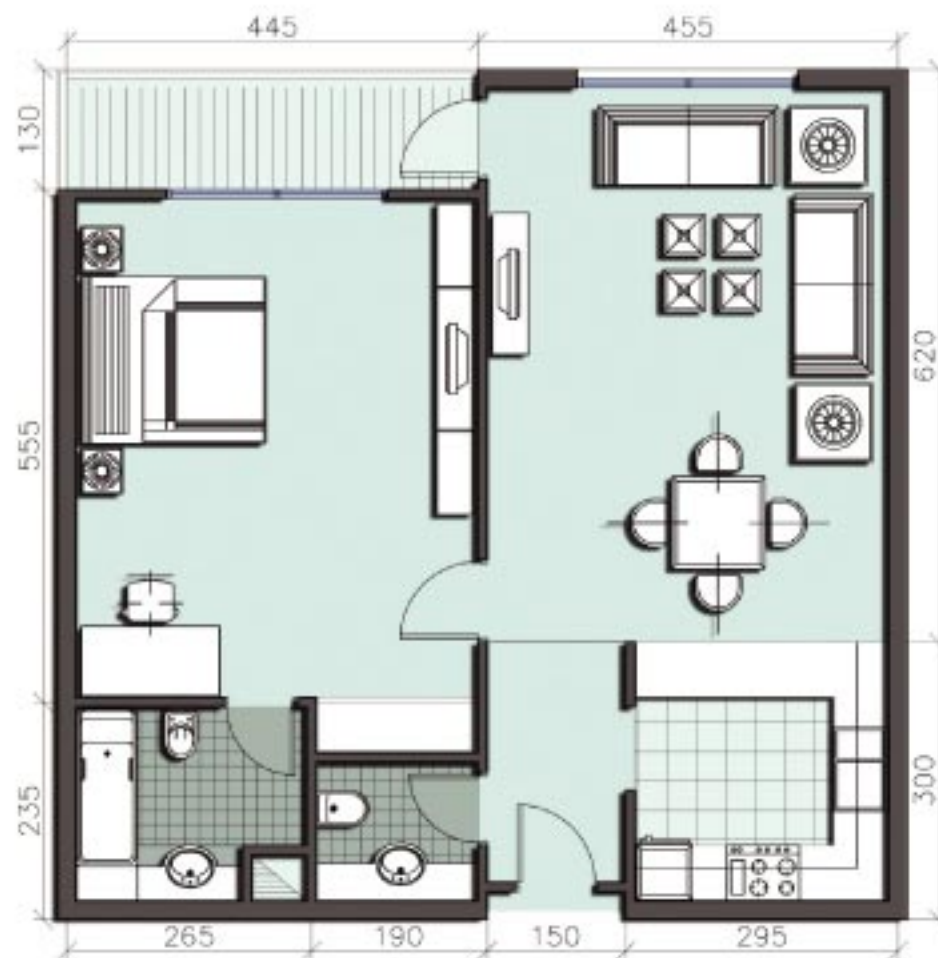
High Returns





TOTAL AREA	NET AREA	BALCONIES AREA
41.07 m2	41.07 m2	0 m2

Typical studio floor plan



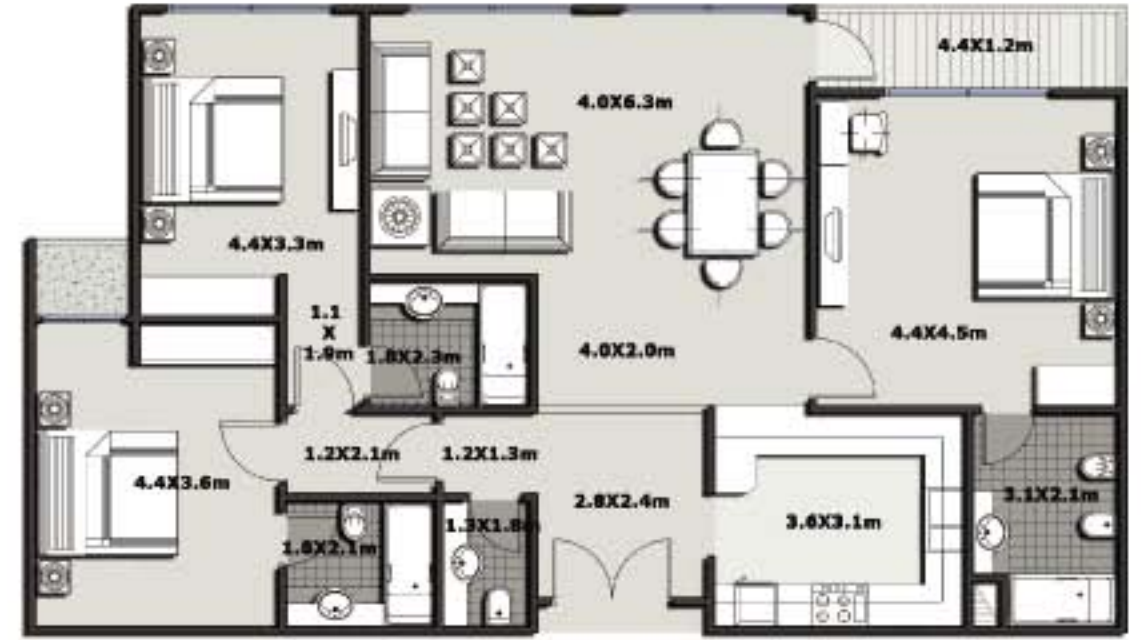
TOTAL AREA	NET AREA	BALCONIES AREA
82.40 m2	76.60 m2	5.80 m2

Typical 1 bedroom floor plan



TOTAL AREA	NET AREA	BALCONIES AREA
116 m ²	109 m ²	7 m ²

Typical 2 bedroom floor plan



TOTAL AREA	NET AREA	BALCONIES AREA
136 m ²	129 m ²	7 m ²

Typical 3 bedroom floor plan