



PARK TOWERS  
AT DIFC



Dubai, promises to be the destination for intelligent property investors. With some of the most breathtaking buildings and prestigious projects, Dubai is rich with every conceivable contemporary comfort.

## THE CITY OF TOMORROW

A truly designer city, Dubai boasts of a lifestyle that is unique, yet desirable. A bustling metropolis, with towering skyscrapers and quiet boutique offices, Dubai is clearly a business hub and commercial capital of the region. With world-class shopping malls, restaurants, cafes and entertainment facilities, Dubai is the city of the future.





Located at the crossroads of the major international capital markets of New York, London and Hong Kong, Dubai is the hub connecting the region with the 24 hours/7 days a week global financial network. Conceived by the Government of Dubai for the benefit of UAE, the location is merely seconds away from Gold, Stocks & DIFX and minutes away from the epoch making monorail transport system.

## A SELF-CONTAINED LOCATION

A unique integration of buildings, offering everything expected of a world-class cosmopolitan city - including offices, serviced apartments, hotels, shops and restaurants, it even has a museum, an art gallery and a performing arts centre adding to its attraction as a resort destination.



DIFC

Dubai  
International  
Financial  
Centre

The DIFC offers a highly attractive investment environment, including:

- 100 percent foreign ownership
- Zero percent tax rate on income and profits
- Wide network of double taxation treaties available to UAE incorporated entities
- No restrictions on foreign exchange
- Transparent operating environment with high standards of rules and regulations
- Ultra modern office accommodation, state-of-the-art technology, sophisticated infrastructure and business continuity facilities of uncompromisingly high standards





Inspired by the evolution of Dubai and the undulating soft forms of the desert, the Park Towers is an incredible twin landmark. A two-tower residential project, it has been designed by some of the finest architects in the world.

## APPEALING TO THE MOST DISCERNING TASTES

Its duality, expressed by the two vertical solid fins, represents the rigid urban form reaching into the sky, from which the curved expressive soft form of the tower façade is suspended. Offering a panoramic view of Dubai and the financial centre, the towers express the aspiration of modern living within an exciting urban development.

Surrounded by lush green walkways

Exquisite 1, 2 and 3 bedroom apartments

Beautifully designed lobby



Designed to provide exceptional comfort and convenience, Park Towers is poised to be the most sought after address in Dubai's International Financial Centre. A true masterpiece of contemporary architecture and distinct styling.

## CAPTURING THE ESSENCE OF LIFE

The Park Towers is intelligently designed to ensure that every apartment has a wide balcony offering you the freedom to relax and enjoy the stunning views of the financial district.

Every apartment includes excellent facilities and services:

Central air-conditioning

Ceramic floors throughout

Double glazing

Kitchen amenities including designer fridge and cooker

Individual post boxes

Round-the-clock security

Concierge desk offering 24-hour services

5-star amenities such as room service and housekeeping





Unwind anywhere and anytime. With world-class recreational facilities. Whether you'd like to wander into a distant dream, attend to your mind's needs or simply experience a little peace and tranquility; Park Towers is the place to be.

## LEISURE UNLIMITED

Garnish your life with an exotic and luxurious lifestyle. Make quality memories an every day event.

Banquet hall for private parties & gatherings

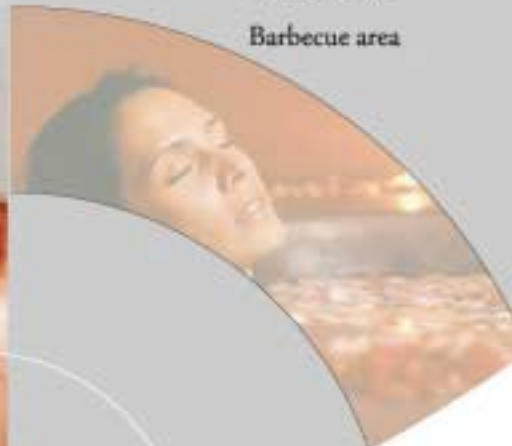
Advanced temperature-controlled swimming pool

Health club and gymnasium

Spacious steam, sauna and Jacuzzi

Tennis court

Barbecue area



Minutes away from the hip and happening parts of the city, Park Towers adapts a style that meets and exceeds the demands of the most sophisticated lifestyles. And thus proves to offer the ultimate convenience for anyone seeking to live, work and enjoy their leisure time in one strategic location.

## WORK AND SHOP AT ONE PLACE

The extensive range of restaurants offer you the liberty to dine in style, in the towers executive restaurant or simply order for room service.

Business centre

Meeting room designed for business meetings

High-speed internet access

Fax and photocopying facility

Round-the-clock manned help desk

Cafés and restaurants

Shopping boulevards

Elevated coffee lounge projecting a dazzling view of DIFC

Underground parking



All registered owners of Park Towers at DIFC apartments will be entitled to a UAE residence visa (to be issued by the relevant Dubai Government Authorities under their standard terms and conditions).

## EASY PAYMENT SCHEDULE\*

Deposit	10%	Payable on signing of reservation form
1st Installment	15%	Within 30 days from signing of reservation form
2nd Installment	15%	Within 120 days from signing of reservation form
3rd Installment	10%	Within 180 days from 2nd Installment OR On completion of piling, whichever comes earlier.
4th Installment	10%	Payable on completion of Parking Podium
5th Installment	10%	Payable on completion of 10th floor structure
6th Installment	10%	Payable on completion of 20th floor structure
7th Installment	10%	Payable on completion of the structure
8th Installment	10%	Payable on completion

Convenient mortgage options available from leading banks like Abu Dhabi Commercial Bank (ADCB) and Union National Bank (UNB). Damac also offers mortgage advisory services. Please call on 04-3322005 to benefit from these services.

FOR FURTHER INFORMATION



**Universal Property Agents**

**100 Hibernia Road**

**Hounslow**

**Middlesex**

**TW3 3RN**

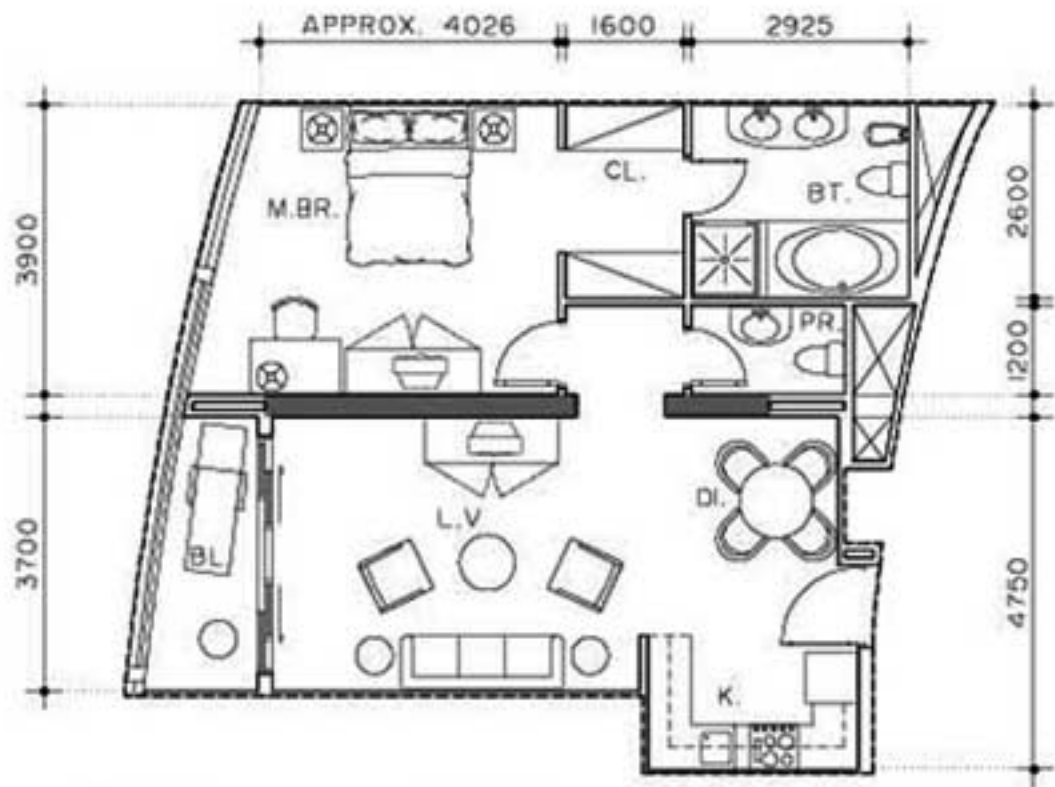
**Tel: 0871 711 8417**

**Fax: 0871 711 8418**

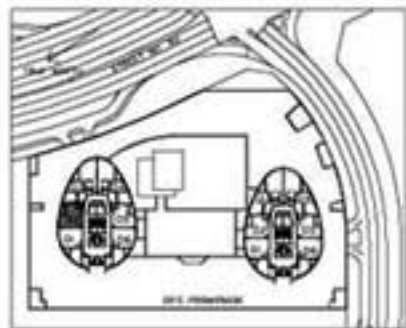
**E-mail: [logistics@upamail.com](mailto:logistics@upamail.com)**

**Website: [www.universal-property-agents.com](http://www.universal-property-agents.com)**

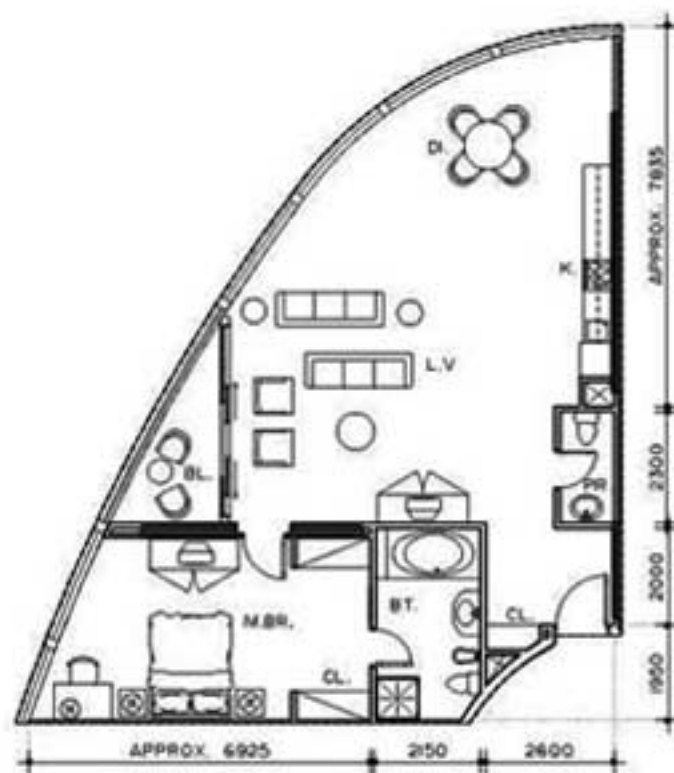
TYPICAL 1 BEDROOM - FLOOR TYPE F



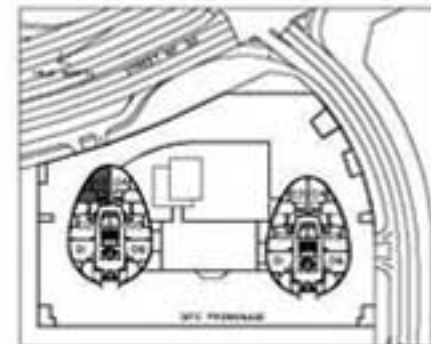
APARTMENT NO. FLOOR NUMBER APARTMENT TYPE NO. MAID  
**3003 - 1BR - NM-C**



TYPICAL 1 BEDROOM - FLOOR TYPE B



APARTMENT NO. FLOOR NUMBER APARTMENT TYPE NO. MAID  
**3203 - 1BR - NM-D**

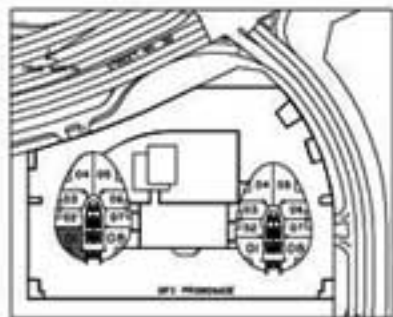




### TYPICAL 2 BEDROOM - FLOOR TYPE D



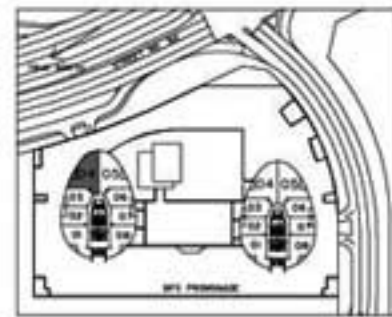
APARTMENT NO. FLOOR NUMBER: **2701**  
 APARTMENT TYPE: **2BR - NM-C**  
NO MAID



### TYPICAL 2 BEDROOM - FLOOR TYPE D

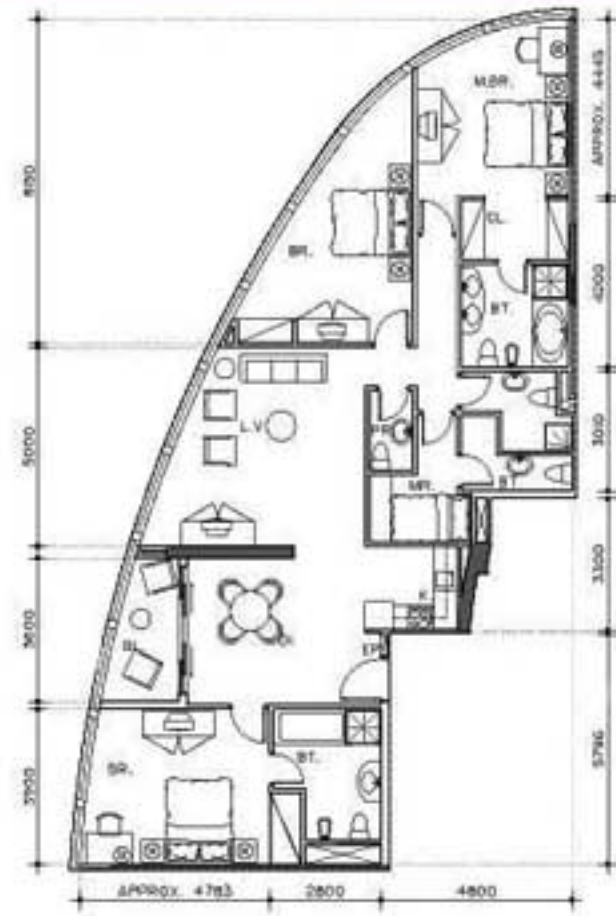


APARTMENT NO. FLOOR NUMBER: **0404**  
 APARTMENT TYPE: **2BR - M-B**  
MAID

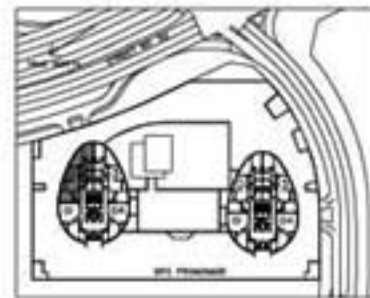




# TYPICAL 3 BEDROOM - FLOOR TYPE G



APARTMENT NO. 3602  
 FLOOR NUMBER 3BR  
 APARTMENT TYPE M-B  
 MAID



APARTMENT NO. 3501  
 FLOOR NUMBER 3BR  
 APARTMENT TYPE M-E  
 MAID

