





In the heart of
the upcoming business address.



Dubai is the destination of the intelligent investor and connoisseurs of fine living. And Burj Side Boulevard is located right next to the world's tallest building, the Burj Dubai and is within easy access to the world's largest mall, the Dubai Mall. An incredible location in the vibrant side of town, this is easily the most prestigious address in Dubai and the centre of designer lifestyle. The advantage of being part of this wonderful project is that homeowners will not only reside in the most prestigious square kilometer on earth, but also enjoy panoramic views of the entire Burj Dubai district.



Burjside Boulevard takes luxury living to an all time high. Transcending 'the seen and heard', the tower reaches an altogether new stunning summit of architectural achievement and hospitality. A 36-storey spectacle, Burjside Boulevard also has 3 levels of podium and 1 level of leisure, all offering uninterrupted views of bustling Business Bay and Burj Dubai. Welcome to a new high in serviced apartments.

A tall, cylindrical skyscraper at night, illuminated from within. The building has a curved facade and is topped with two thin spires. The base of the building is visible, showing a glass-fronted entrance area with palm trees in front. A dark teal horizontal bar is overlaid across the middle of the image.

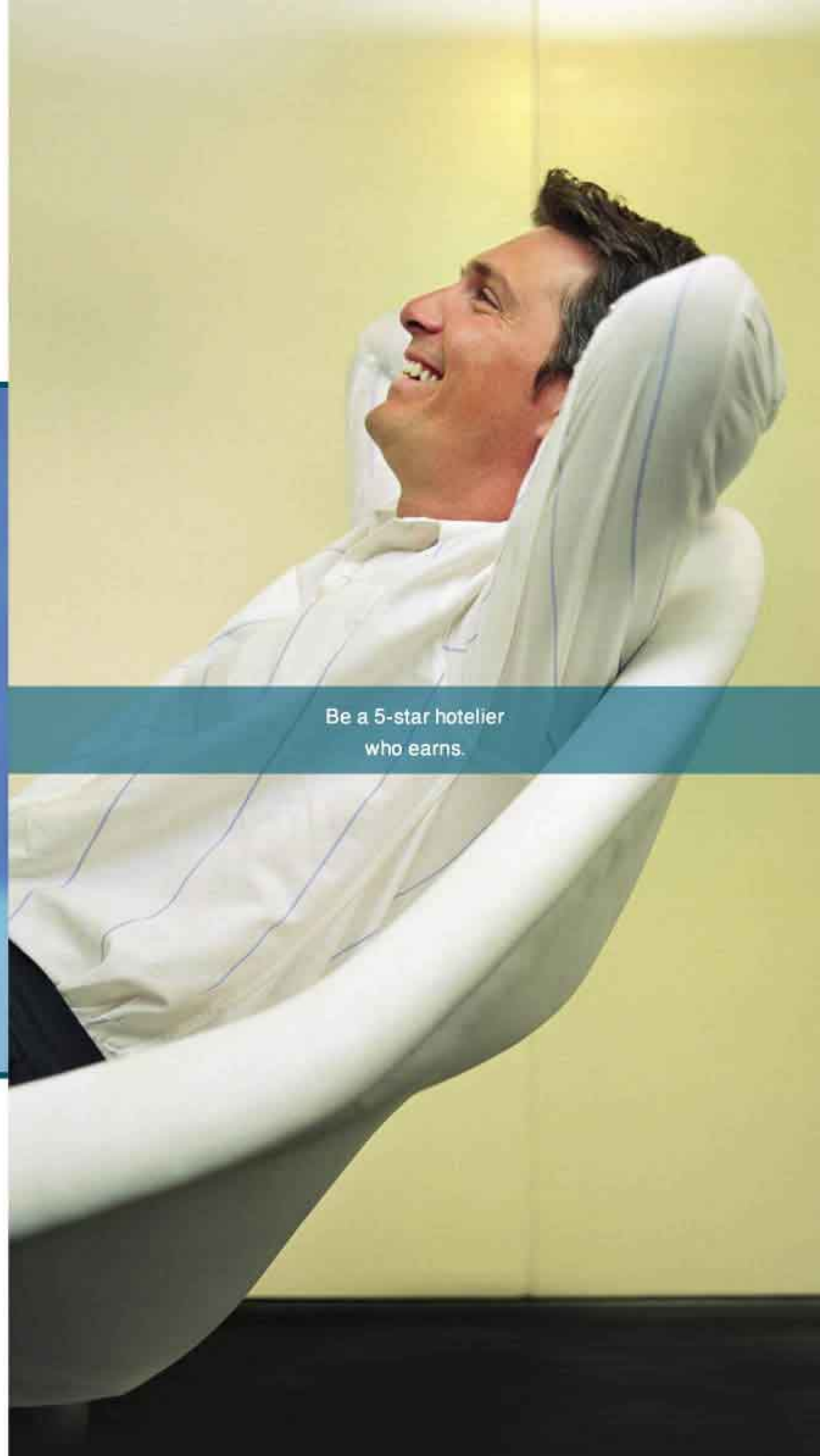
Luxury serviced apartments.



Be a 5-star homeowner
who lives in.

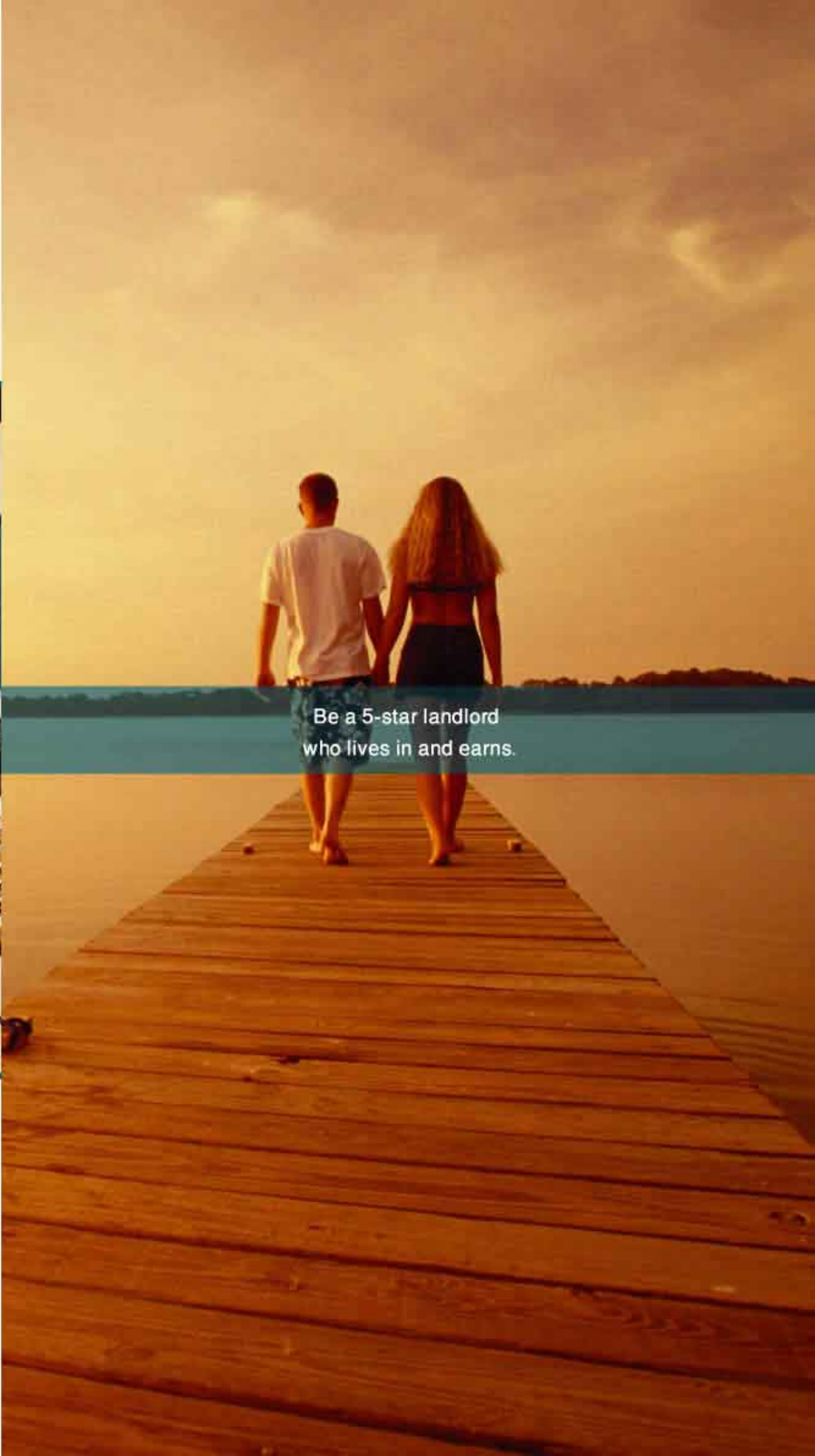


Live in the home you always wanted, with 5-star services and amenities whenever you want. Managed as per 5-star international standards. Indulge in the red carpet life, every single day of your life.



Be a 5-star hotelier
who earns.

This is complete relaxation for you and complete management for us. What makes it more delightful is that your apartment would give you a share of the income thus generated at a nominal management fee.



Be a 5-star landlord
who lives in and earns.

Enjoy the best of both worlds - where you can stay in an apartment of similar type for 4 weeks and then simply sit back and enjoy returns for the rest of the year.



Welcome to an exclusive
win-win-win situation.

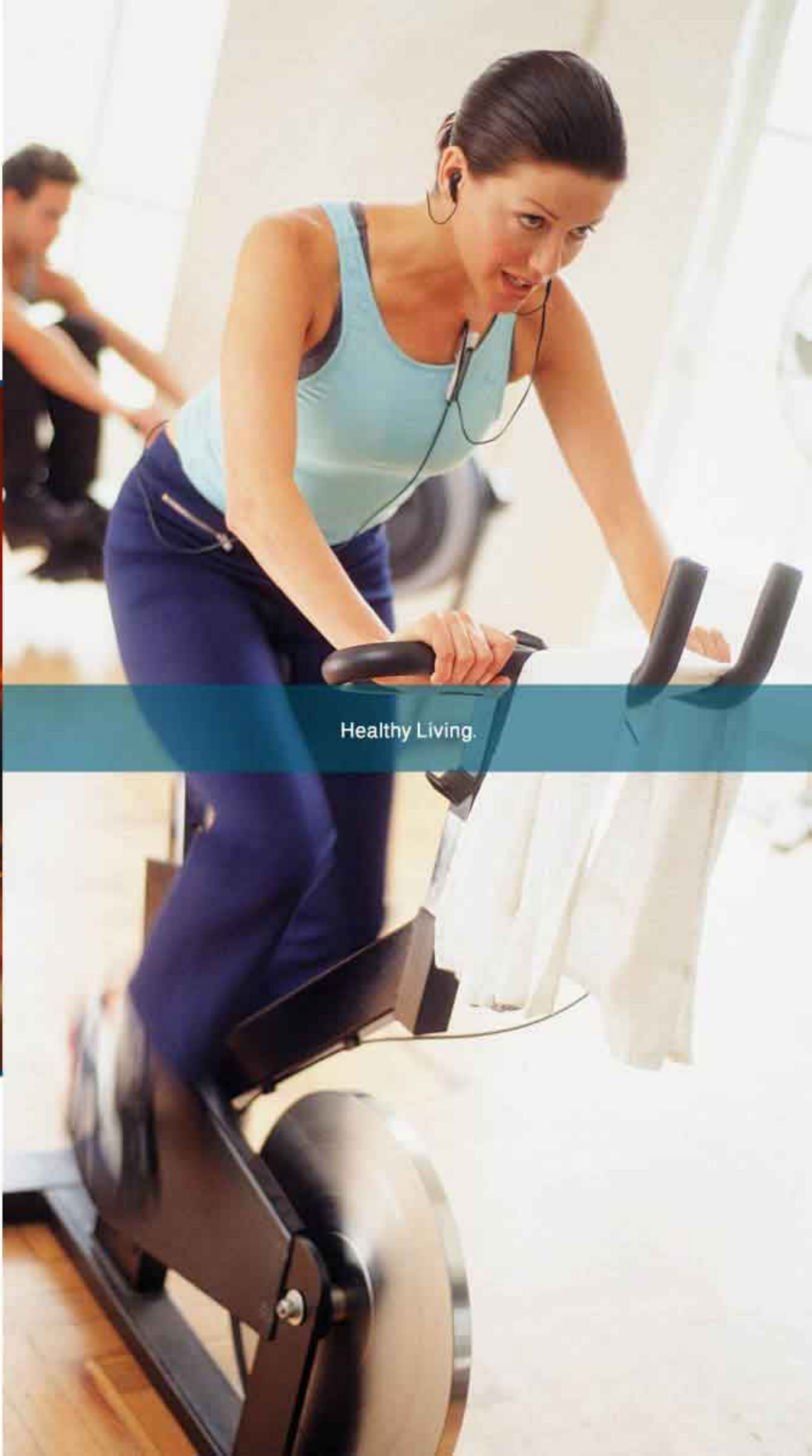


Any option you decide upon is designed to enrich your life either which way. All options also offer you the flexibility of changing over and variable time periods to meet your short-term needs and long-term desires. Needless to say, you are at complete liberty to transfer or forward sell your investment with accompanying value appreciation of that time.



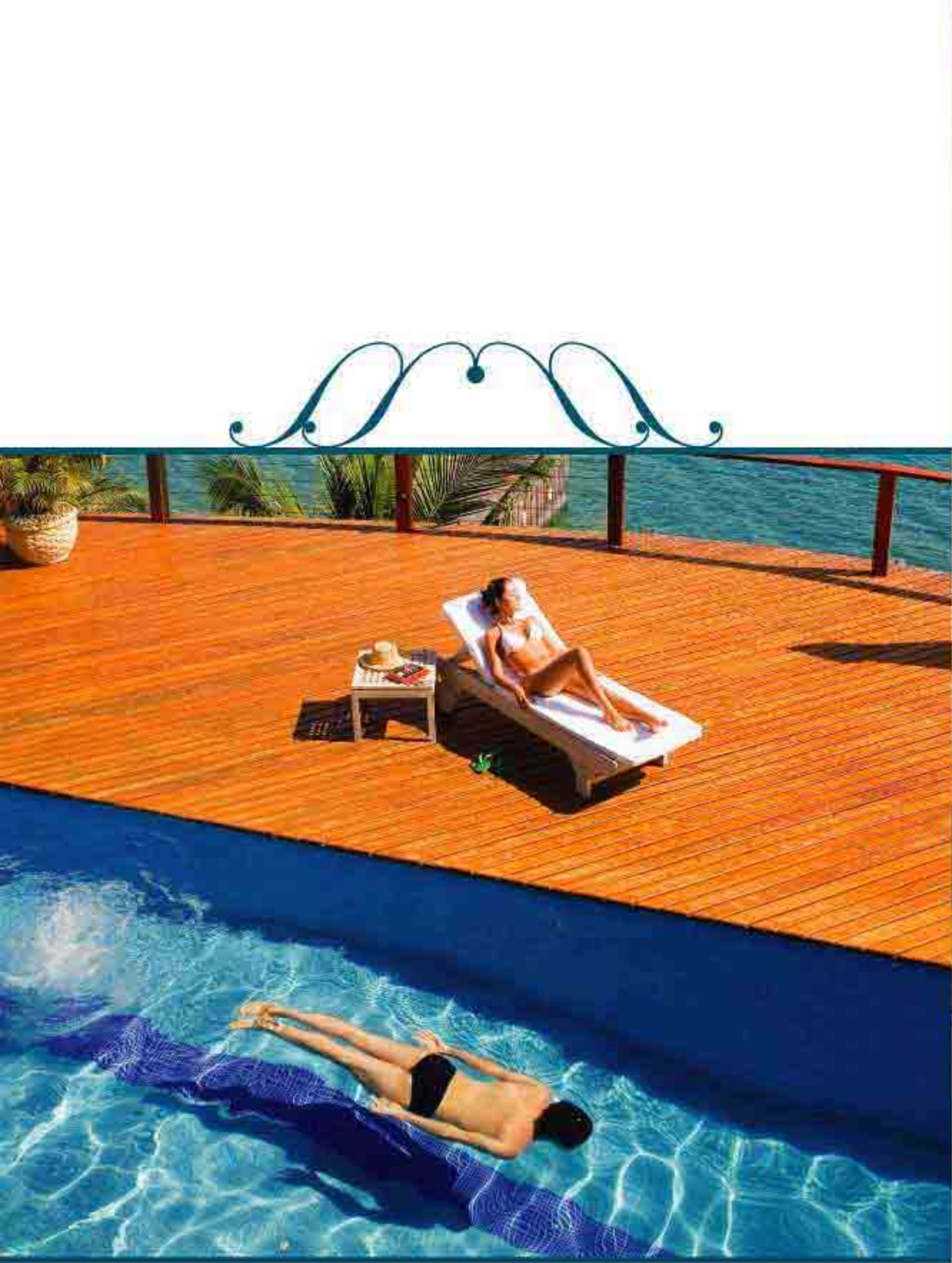
Luxury Living.

The 36-storey architecture heralds a new wave of luxury. From the moment you step inside, you'll be swept away into the lap of luxury. Contemporarily opulent three, two and one bedroom apartments; your home will also be furnished with a fully equipped kitchen.



Healthy Living.

An extensive range of the latest equipment to sweat out and tone up. Competing for your time and attention are separate full fledged gymnasiums for men and women, spa baths, sauna and massage rooms. And since staying fit and looking beautiful make the perfect couple, visit the spa to truly complete this wondrous celebration of life. A privilege exclusive to residents, with virtually anything and everything that you'd ever need, from herbal facials to skin toning to hair steaming to warm milk pedicures.



A unique lifestyle
at your service.

Complemented by the finest privileges that mark this ultimate lifestyle, Burjside Boulevard offers you retail on podiums 1 & 2, a leisure area on top of the podium which has a restaurant, lounge - serviced by a fully equipped kitchen, multi-purpose function hall as well as children's game room. The tower also has a swimming pool, jogging track, children's play area and parking on 4 levels with dedicated parking space for each apartment.

LEVEL 3



FITNESS CENTER & PARKING

LEVEL 1



RETAIL & PARKING

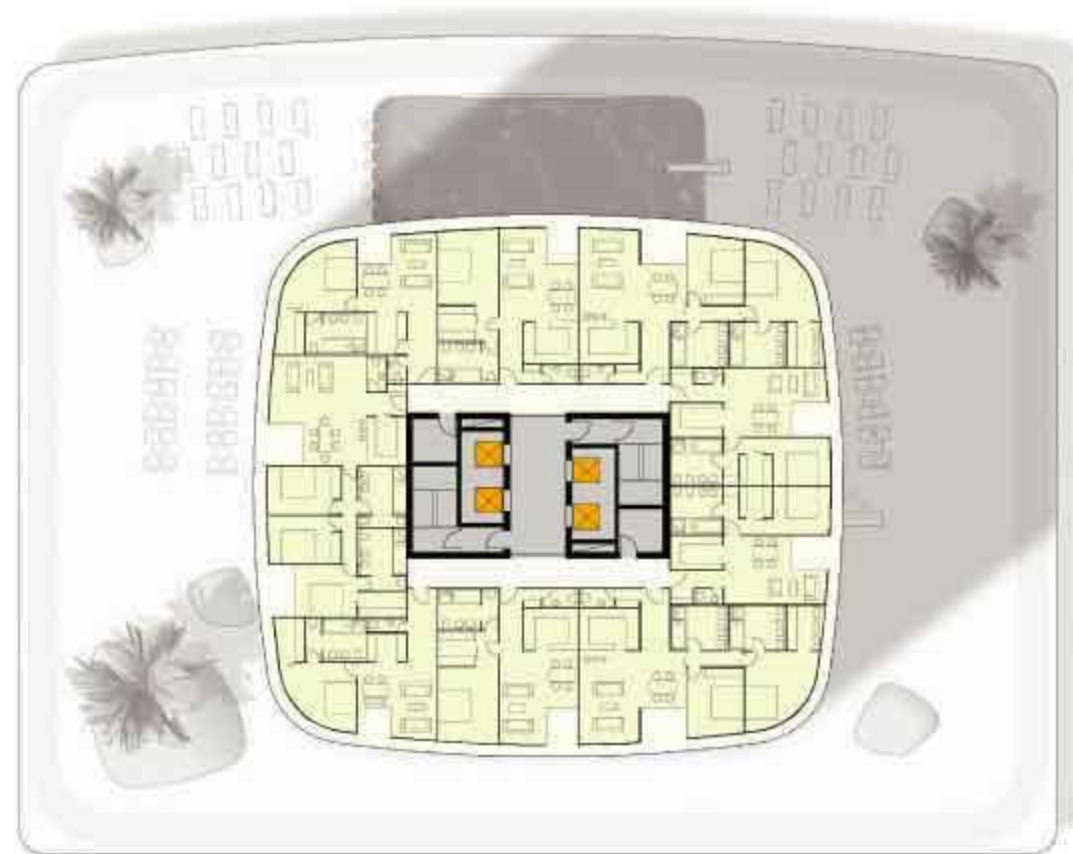


LEVEL 4



RESTAURANT & LEISURE

LEVEL 5-36



TYPICAL RESIDENTIAL FLOOR



LEVEL 2



PARKING

LEVEL 0 (GF)



RECEPTION / RETAIL & PARKING

